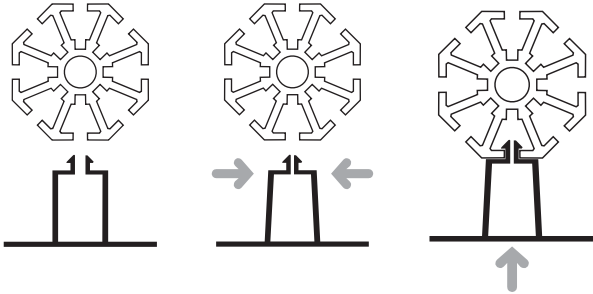


Inserting Shell-Clad Clips



INSERTING SHELL-CLAD CLIPS

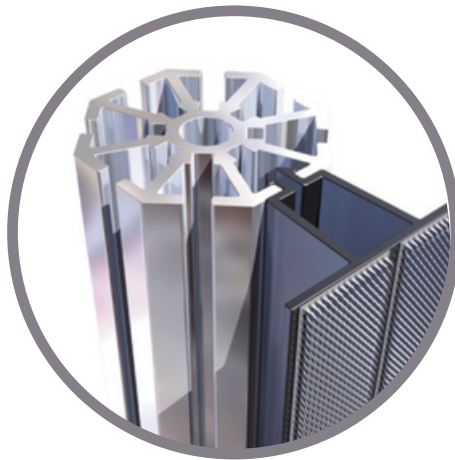
Clip into place by squeezing arrow head at one end and gradually pushing into the shell scheme groove



Gentle pressure may be necessary but this can be achieved by hand, i.e. no tools are required.

Do NOT align a full length and force into position.

The bottom Shell-Clad clip should be rested on the pillar base otherwise your Shell-Clad will be visible above your graphics.



REMOVING SHELL-CLAD CLIPS

Squeeze the arrow head at one end, twist either clockwise or anti-clockwise and pull out of shell scheme.

WARNING: Shell-Clad has right angled (sharp) edges. Please be careful not to cut yourself when working with this product.

FINALLY & VERY IMPORTANTLY

Not all shell schemes are the same. Please contact us a month before your next show to check the compatibility of your system with other shell schemes.

Shell-Clad is designed to attach graphics and similar lightweight materials to a shell scheme. Do not attempt to hang heavy objects with Shell-Clad.

LOOKING AFTER YOUR MAGICLAD PANELS

ALWAYS ROLL WITH GRAPHIC FACING OUTWARDS

ALWAYS STORE PACKING TUBES UPRIGHT

ALWAYS STORE PANELS AT ROOM TEMPERATURE

PACKING

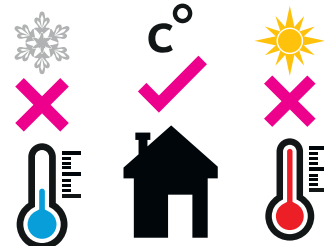
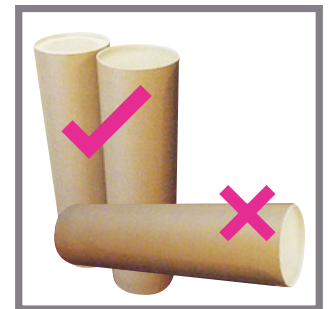
NEVER DROP A PRINTED PANEL INTO A TUBE.

Instead roll each panel as you would a poster (REMEMBER: image facing outwards), lower carefully into the packing tube and then release, letting the panel expand to a wider diameter.

Maximum of three printed panels per 300mm diameter tube.

COURIERS DO NOT CARE!

If you are shipping your panels by courier; pack very carefully, use plenty of bubble wrap and ensure that the tube caps are very secure.



For more information call us on 01825 872 390

IT'S ALL ABOUT IMPACT • www.shell-clad.com

 SHELL-CLAD[®]

Handling Your Fabriclad Panels



Always make sure you hang your Fabriclad correctly to make an **IMPACT!** Follow our handy guide below:

SHELL-CLAD CLIPS

Before hanging any panels, please ensure that all your clips are in place.

HANGING PANELS

General

Your fabric panels have Velcro stitched along all four edges. Both your panels and the Velcro we use have a degree of elasticity, enabling you to stretch your graphic across your shell scheme frame. Your panel hanging sequence will be advised separately.

As a rule, start by attaching one side of your graphic down the full length of (say) the left hand wall pillar. As you do this pull taut but not so tight that you pull the graphic loose! Next "tag" the top along all the mid-wall pillars.

Then (pulling tight) attach the other side of your graphic down the (say) right hand wall pillar. Now "tag" the bottom along all the mid-wall pillars. Once done, work your way around again pulling tight and straightening up.

NOTE: Your Fabriclad graphic should be smooth and flat. Do not worry if there are 'fold' creases visible. However your graphic will need to be taut to remove these.

HANGING SEQUENCE

We will supply you with instructions regarding the hanging sequence.

REMOVING CREASES

Using the steamer

You can use a steamer to soften and remove any stubborn packing creases. Please follow steamer instructions. Please make time to do this as it makes a significant difference for very little effort. If your steamer is not removing creases, the chances are your panel is not taut. You will need an extension power cable to reach all corners of your stand.

TOOLS

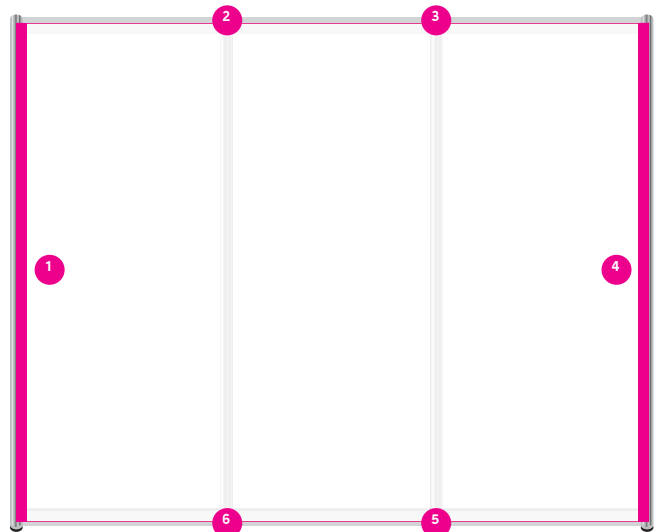
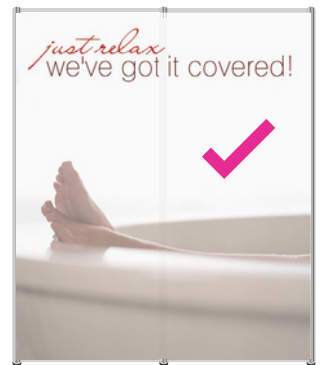
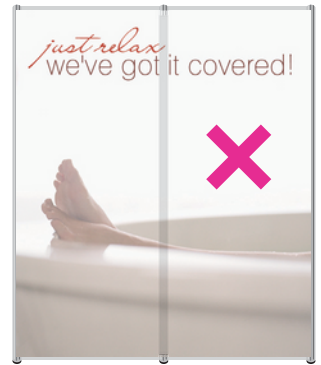
You will need a short ladder or stool and your steamer (which requires power). If you have no power on your stand we suggest you take a long extension cable and strike a deal with a neighbour.

PHOTOGRAPHS

Photographs are a useful reference point for planning your next show. So take your camera.

WASHING

Fabriclad panels are machine washable. Put your graphic through a 30 degree wash cycle using a small amount of non-biological powder. Once washed dry the graphic flat, if possible, and when dry you can run an iron over it BUT please put a clean white cloth over the graphic first and then iron over this. You can steam out any remaining creases once the graphic is up on your stand.



FINALLY & VERY IMPORTANTLY
Not all shell schemes are the same. Please contact us a month before your next show to check the compatibility of this system with other shell schemes.

For more information call us on 01825 872 390

IT'S ALL ABOUT IMPACT • www.shell-clad.com

 SHELL-CLAD®

Handling Your Magiclad Panels



Always make sure you hang your Magiclad correctly to make an IMPACT! Follow our handy guide below:

SHELL-CLAD CLIPS

Before hanging any panels, please ensure that all your clips are in place.

HANGING PANELS

As a general rule, the skill set required is similar to that of wall papering. Hang the first panel level and square as all the other panels, butt up to this first panel (ie if the first panel is crooked, they all will be). Hang all panels midway between the floor and the ceiling grid (if there is one). Do not hang panels touching the floor; allow a 5-10mm air gap between the floor and the bottom of each panel.

Be sure to align images, colour blocks and text as you go along.

Shell-Clad panels are fixed with Velcro so there is some vertical movement/drop (downwards). To allow for this, hang each adjoining panel a couple of mm too high as it will "drop" slightly.

IMPORTANT: don't worry if you don't get it right first time, simply peel the panel off and start again; you can do this as many times as you want.

You should pick-up the 'knack' quite quickly.

HANGING SEQUENCE

We will supply you with instructions regarding the hanging sequence.

TOOLS

You will need a short ladder or stool. You may also wish to take a spirit level to ensure that the first panel is level, but we find that a good eye is sufficient.

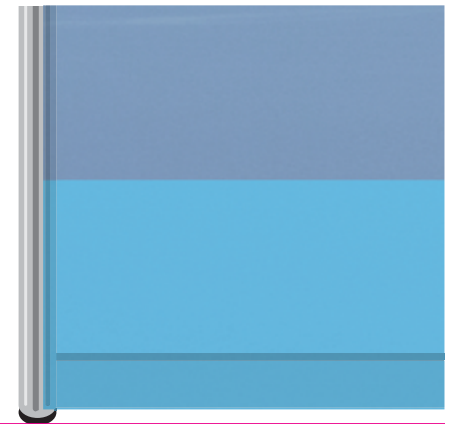
PHOTOGRAPHS

Photographs are a useful reference point for planning your next show. So take your camera.

FINALLY & VERY IMPORTANTLY

Not all shell schemes are the same. Please contact us a month before your next show to check the compatibility of this system with other shell schemes.

5 - 10 mm



For more information call us on 01825 872 390

IT'S ALL ABOUT IMPACT • www.shell-clad.com

 SHELL-CLAD[®]